

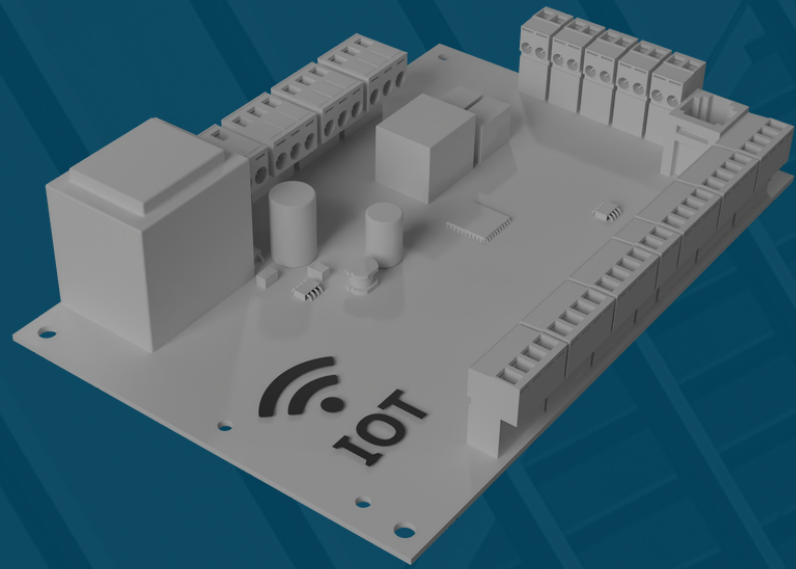
The logo features a stylized blue 'D' on the left, followed by the word 'estech' in a blue sans-serif font with a small leaf icon above the 'h'. Below 'estech' is 'HRC' in a larger, bold, blue sans-serif font.

# estech<sup>®</sup> HRC

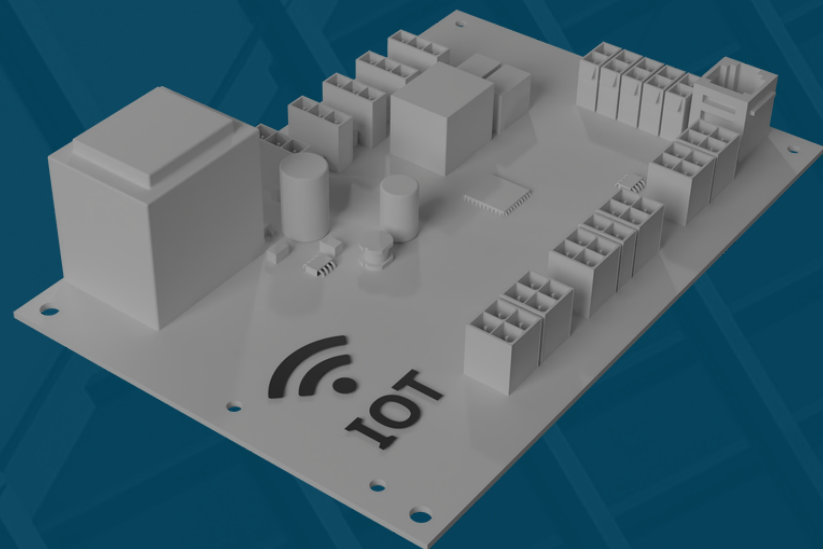
Heat Recovery Control Systems



# Destech-HRC Controller



(With Terminal)



(With Socket)



Constant Flow



UVL Control (UVL Control Functions)



Water Coil Control Functions



DX System (DX Functions)



By Pass Functions



CO2, Humidity, UVL (Sensor Options)



4 Different Timers Each 7 Days



Electrical Heater Functions



2X Filter Functions



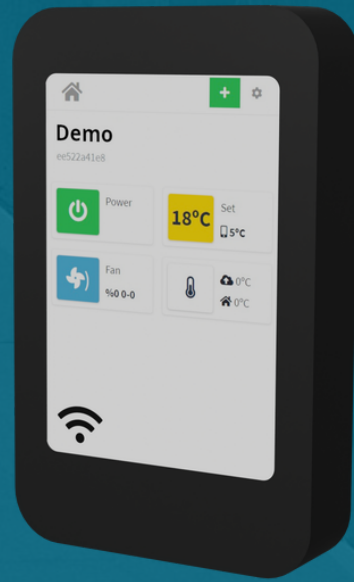
Frost Protection

Destech-HRC Controller Highlights



# Human Machine Interfaces

## Destech-HRC IoT Touch Panel



WiFi



Touch Screen



Service Menu



Android /IOS



2X MODBUS



4 Different Timers  
Each 7 Days



Automatic Screen  
Management

## Destech-HRC IOT Pro Panel



WiFi



Mini Screen



Compact Design



Android /IOS



Service Menu



# Human Machine Interfaces

## Destech-HRC IoT Basic Panel



WiFi

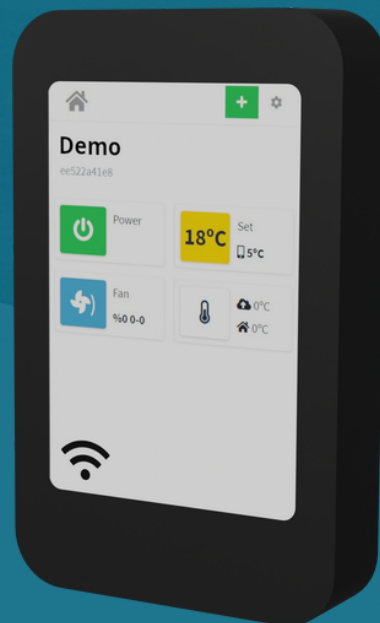


Compact Design



Android /IOS

## Destech-HRC Touch Panel



Touch Screen



Automatic Screen Management



2X MODBUS



4 Different Timers  
Each 7 Days



Service Menu



# Destech-HRC Digital Panel



Automatic Screen Management



4 Different  
Timers  
Each 7 Days



Service Menu

# Destech-HRC Basic Panel



Basic Design

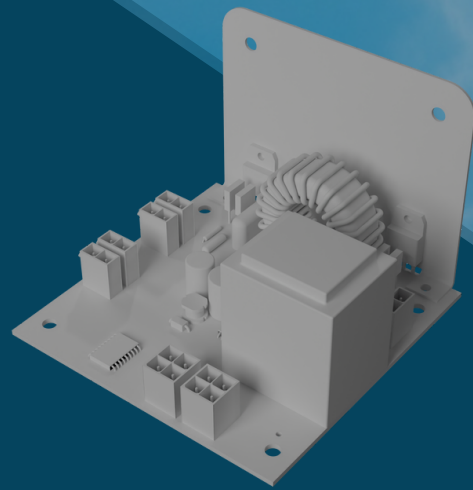


Service Menu



## Sensor Group / Accessories

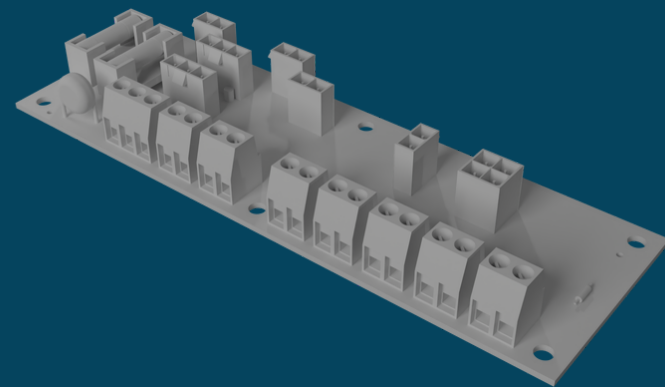
### Destech-HRC AC Fan Speed Controller



For AC type fans, speed control can be done with 0~230V voltage control. Therefore, the PWM output of the control card needs to be converted at 0~230V.

"AC Fan Speed Control Board" has been produced for this purpose.

### Destech-HRC Terminal Board

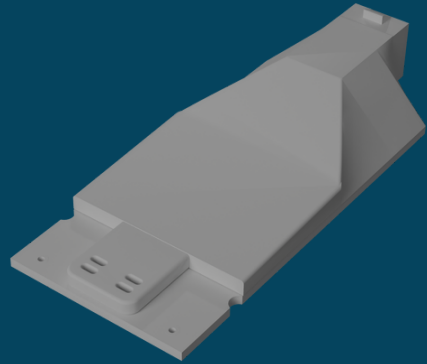


It is used with a socket connected control card. The use of some functions of the control card (Boost function, BMS function, Modbus function, etc.) depends on the end user's request. External equipment connection is required to use these functions.

The end user will be able to easily make the desired connection to the control card with this.

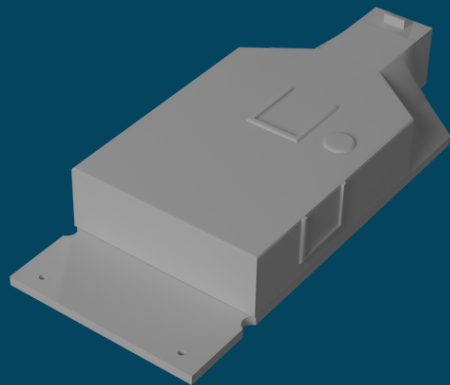


## Destech-HRC Humidity Sensor



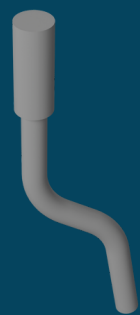
It is the sensor used to measure the humidity of the air. The control board is calibrated according to this sensor. Channel type is suitable for use.

## Destech-HRC CO<sub>2</sub> Sensor



It is the sensor used to measure the amount of carbon dioxide (CO<sub>2</sub>) in the air. The control board is calibrated according to this sensor. Channel type is suitable for use.

## Destech-HRC NTC 10K Thermistor (10cm Cable)



NTC 10k $\Omega$  (@25°C) type sensor used for air temperature measurement. The control board is calibrated according to this sensor. Channel type is suitable for use.



# APPLICATION

IoT Mobile Application; It has been developed to enable the user to simply control all the basic functions of the heat recovery device from any mobile device.

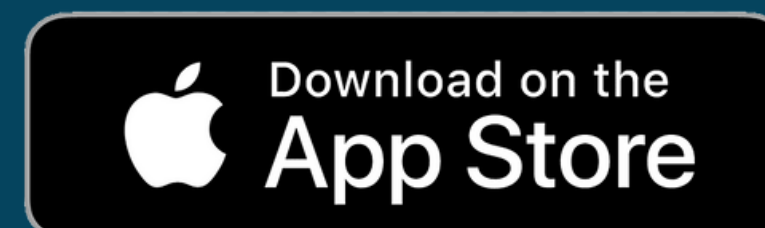
The application compatible with mobile devices can be downloaded from Google Play Store or App Store.



ANDROID



IOS

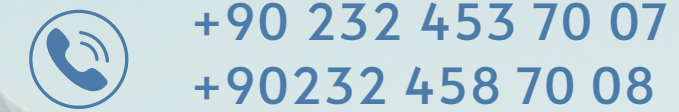






[www.destechhrc.com](http://www.destechhrc.com)

Destek Otomasyon, which started its commercial activities in 2009 with its expert staff and devoted engineers, aims to meet the needs and expectations of its business partners in its projects in the best way. Since the day it was founded, it has been continuing its activities in line with this purpose.



Opt mum Cost  
Effect ve Solut ons

[www.destekotomasyon.com](http://www.destekotomasyon.com)